

TYPE "J"

TYPE "J" Electricity Supply Distribution Fuse-Links

Complying with IEC 60269-2:2013/BS HD 60269-2:2013/BS88-2:2013
(Fuse System I)



Rated Voltage	415V a.c.
Current ratings	20A to 630A (plus 800A)
Rated breaking capacity	80kA
Breaking range & utilisation category	gU
Outline dimensions	SK400 (SK407,SK408,SK409)
Time/current characteristics	SK401
Power dissipation	SK402/1
Current carrying capability	SK403
Cut-off characteristics	SK404
I ² t characteristics	SK405

Lawson Type "J" fuse-links are for use in a.c. electricity supply networks. They are installed in distribution boards, feeder pillars, link boxes, pole mounted cut-outs and heavy duty service intakes.

The range includes all the current ratings specified in BS 88-2 and BS 7656 for fuse-links with the standard 82mm and 92mm fixing centres, together with additional non-standardised fuse-links with 76mm fixing centres and female contact fuse-links.

In addition, a range of cylindrical fuse-links up to 315A, with the same characteristics as the tagged patterns, is available for installation in pole mounted cut-outs

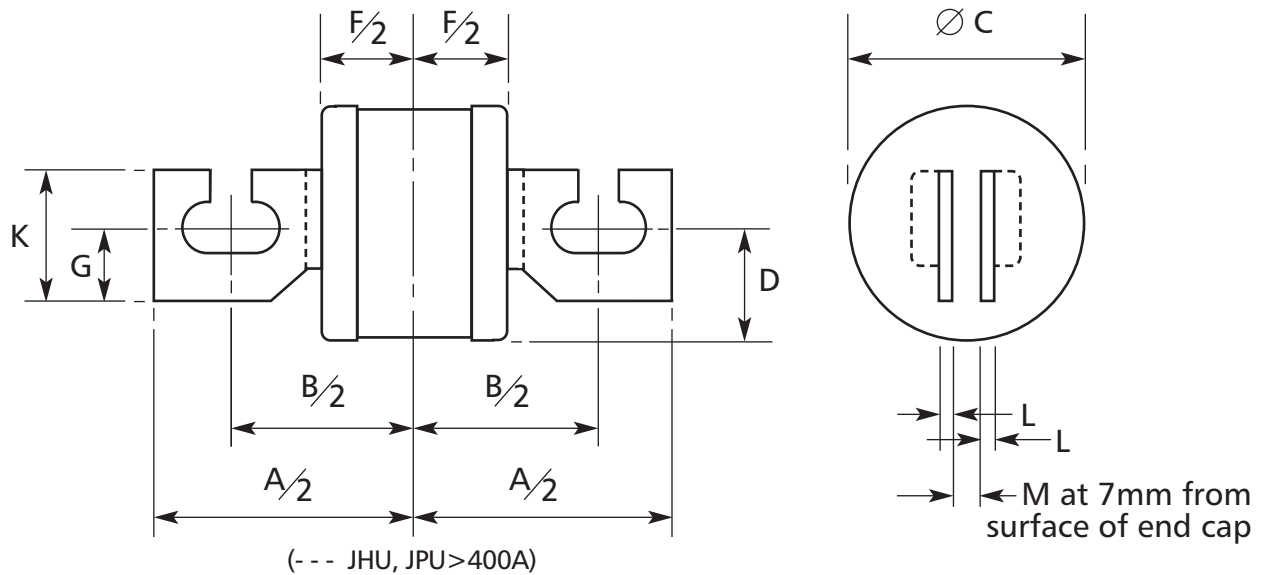
Notes:

1. JPU450, 500, 560, 630A are restricted to intermittent loading when installed in 400A fixed contacts
2. JSU800A is restricted to intermittent loading when installed in 630A fixed contacts
3. IEC60269 and BS88-2 specify performance requirements up to 630A fixed contacts, therefore the performance of JSU800A fuse-links complies with the Breaking Range and Utilisation Category "gG"

OUTLINE DIMENSIONS

Type "J" Electricity Supply Distribution Fuse-Links

Issue: 8 Date: 26.5.2021 Approved TH



TYPE REF.	CURRENT RATINGS (A)	DIMENSIONS (mm)								
		A max	B nom	C max	D max	F max	G nom	K max	L nom	M max min
STANDARDISED DIMENSIONS										
JPU	20, 32, 40, 50, 63, 80, 100*, 125	112	82	26	14	45	18	31	2.4	6.53 6.45
	160*			31	16					
	200*, 250*			35	18					
	315*, 355*, 400*			41	18					
JSU	20, 32, 40, 50, 63, 80, 100*, 125, 160*	132	92	31	16	45	22	38	3.2	8.13 8.05
	200*, 250*			35	17					
	315*, 355*, 400*			41	20					
	450, 500*			51	20					
	560, 630*			61	25					
NON-STANDARD DIMENSIONS										
JHU	20, 32, 40, 50, 63, 80, 100, 125, 160	100	76	31	11	45	18	31	2.4	4.25 4.17
	200, 250			35	13					
JPU	450, 500	112	82	51	18	45	13	25	1.6	6.53 6.45
	560, 630			61	25					

*STANDARDISED CURRENT RATING IN ACCORDANCE WITH BS 88-2:2013 (FUSE SYSTEM I)

IEC 60269-2:2013 / BS HD 60269-2:2013 / BS 88-2:2013

Rated Voltage 415 V a.c.

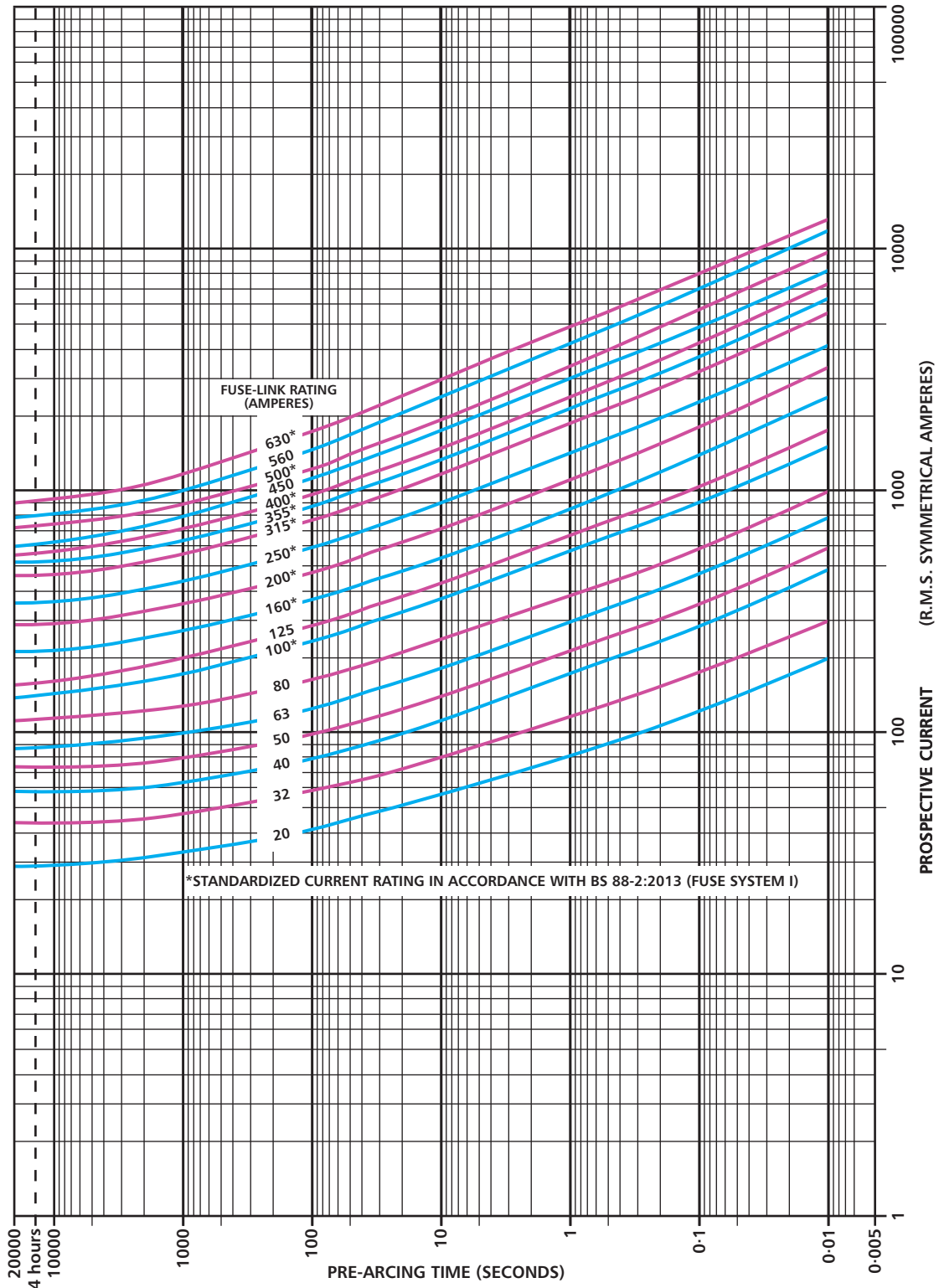
Rated Breaking Capacity - 80 kA at 415 V a.c.

ASTA (20) Certified

TIME / CURRENT CHARACTERISTICS

Type "J" Electricity Supply Distribution Fuse-Links

Issue: 5 Date: 30.4.2021 Approved TH



IEC 60269-2:2013 / BS HD 60269-2:2013 / BS 88-2:2013

Rated Voltage 415 V a.c.

Rated Breaking Capacity - 80 kA at 415 V a.c.

ASTA (20) Certified

POWER DISSIPATION VALUES

Type J 415 Volt E.S. Distribution Fuse-Links
To BS 88-2:2013 (Fuse System I)

CURRENT RATINGS AMPS	TYPE JHU 76mm Fixing Centres	TYPE JPU 82mm Fixing Centres	TYPE JSU 92mm Fixing Centres
20A	2.0W	1.8W	1.6W
32A	2.7W	2.5W	2.2W
40A	3.4W	3.1W	2.8W
50A	4.0W	3.7W	3.3W
63A	5.0W	4.7W	4.5W
80A	6.8W	6.5W	6.0W
100A	6.4W	7.0W	5.5W
125A	9.2W	8.5W	8.0W
160A	12.0W	11.2W	10.5W
200A	13.0W	12.5W	11.5W
250A	18.5W	17.0W	16.0W
315A	21.0W	19.0W	18.5W
355A		23.0W	21.5W
400A		27.5W	25.8W
450A		30.0W	28.0W
500A		35.0W	33.0W
560A		36.0W	34.0W
630A		44.0W	41.0W

IEC 60269-2:2013 / BS HD 60269-2:2013 / BS 88-2:2013

Rated Voltage 415 V a.c.

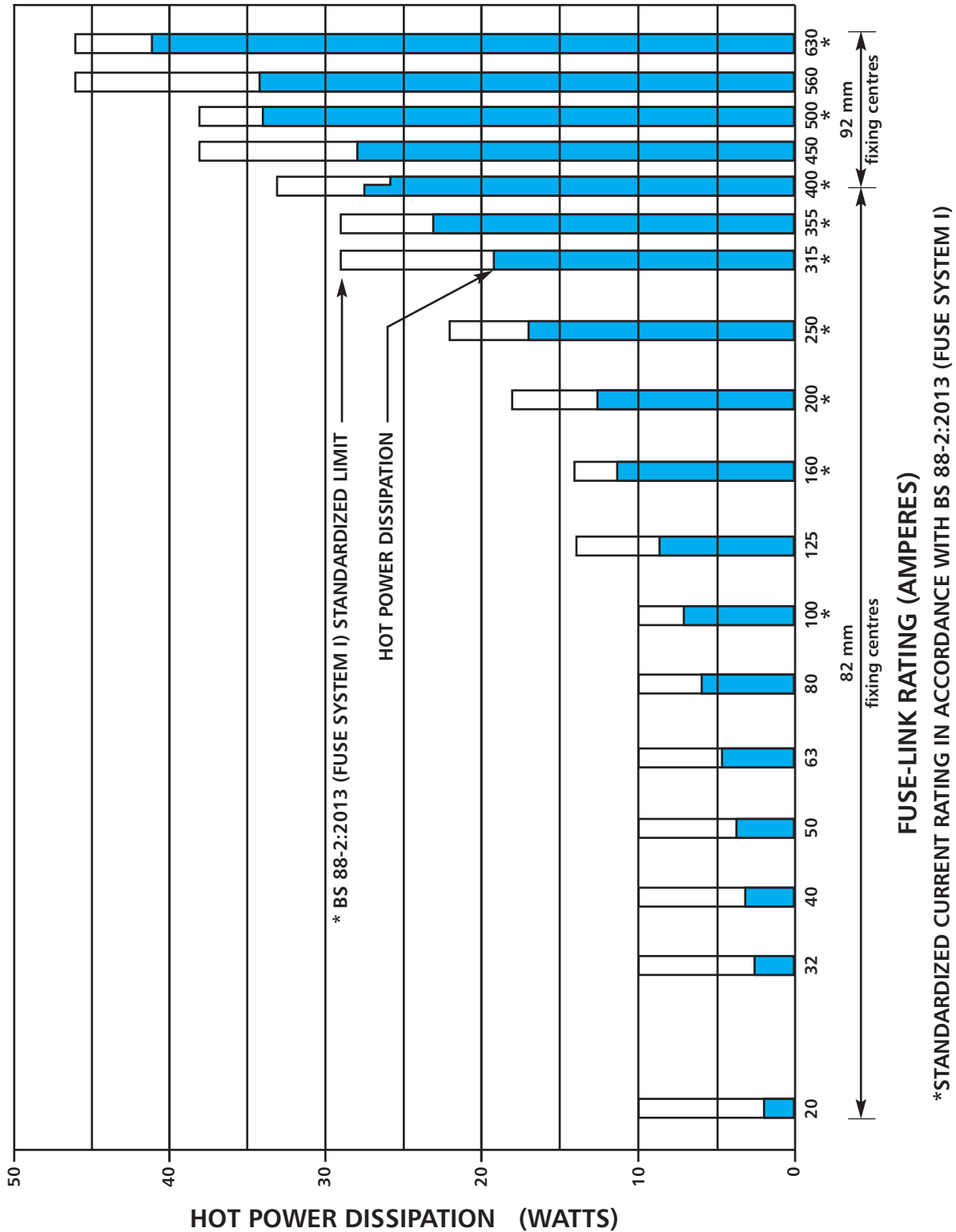
Rated Breaking Capacity - 80 kA at 415 V a.c.

ASTA (20) Certified

POWER DISSIPATION

Type "J" Electricity Supply Distribution Fuse-Links

Issue: 5 Date: 30.4.2021 Approved TH



IEC 60269-2:2013 / BS HD 60269-2:2013 / BS 88-2:2013

Rated Voltage 415 V a.c.

Rated Breaking Capacity - 80 kA at 415 V a.c.

ASTA (20) Certified

FIXING CENTRES (mm)	FUSE-LINK RATING (A)	CURRENT CARRYING CAPABILITY (IN AMPERES) AT ELEVATED TEMPERATURES									
		≤40°C	45°C	50°C	52.5°C	55°C	60°C	65°C	70°C	75°C	80°C
82	20, 32, 40, 50, 63, 80, 100*, 125	FUSE-LINKS FULLY RATED									
	160*										120
	200*								150	140	
	250*							195	185	175	
	315*						240	230	220	210	
	355*				305	295	285	275	265		
	355*			350	345	335	325	315	305	295	
	400*		390	385	380	370	360	350	340	330	
92	450			440	435	430	420	410	400	390	380
	500*		490	480	475	470	460	450	440	430	420
	560		550	540	535	530	520	510	500	490	480
	630*		615	600	593	585	570	555	540	525	510

*STANDARDISED CURRENT RATING IN ACCORDANCE WITH BS 88-2:2013 (FUSE SYSTEM I)

NOTES A. For 92mm f.c. Fuse Links ≤ 400A the current carrying capabilities are increased by 7% up to the full rating of the Fuse-Link.

B. 82mm f.c. Fuse-Links ≥ 400A are restricted to intermittent loading when used in 400A contacts.

Where the Fuse-Link is mounted in the open, the elevated temperature is the ambient air temperature (T_a).

Where the Fuse-Link is mounted in an enclosure, the elevated temperature is the internal "Fluid Environment Temperature" (T_c) within the enclosure.

Where this is not known, it should be assumed to be 15°C higher than the ambient air temperature external to the enclosure i.e. $T_c = T_a + 15^\circ\text{C}$

- EXAMPLES**
- 315A fuse-link (82mm f.c.) mounted in the open air at an ambient air temperature of 55°C. CURRENT CARRYING CAPABILITY = 315A.
 - 400A Fuse-Link (82mm f.c.) mounted in the open air at an ambient air temperature of 50°C, CURRENT CARRYING CAPABILITY = 390A
 - 500A Fuse-Link (92mm f.c.) mounted in an enclosure having an internal temperature of 60°C. CURRENT CARRYING CAPABILITY = 460A
 - 630A fuse-link (92mm f.c.) mounted in an enclosure with an unknown internal temperature and an external ambient air temperature of 40°C. Assume the internal temperature is 55°C (40°C + 15°C). CURRENT CARRYING CAPABILITY = 585A.

IEC 60269-2:2013 / BS HD 60269-2:2013 / BS 88-2:2013

Rated Voltage 415 V a.c.

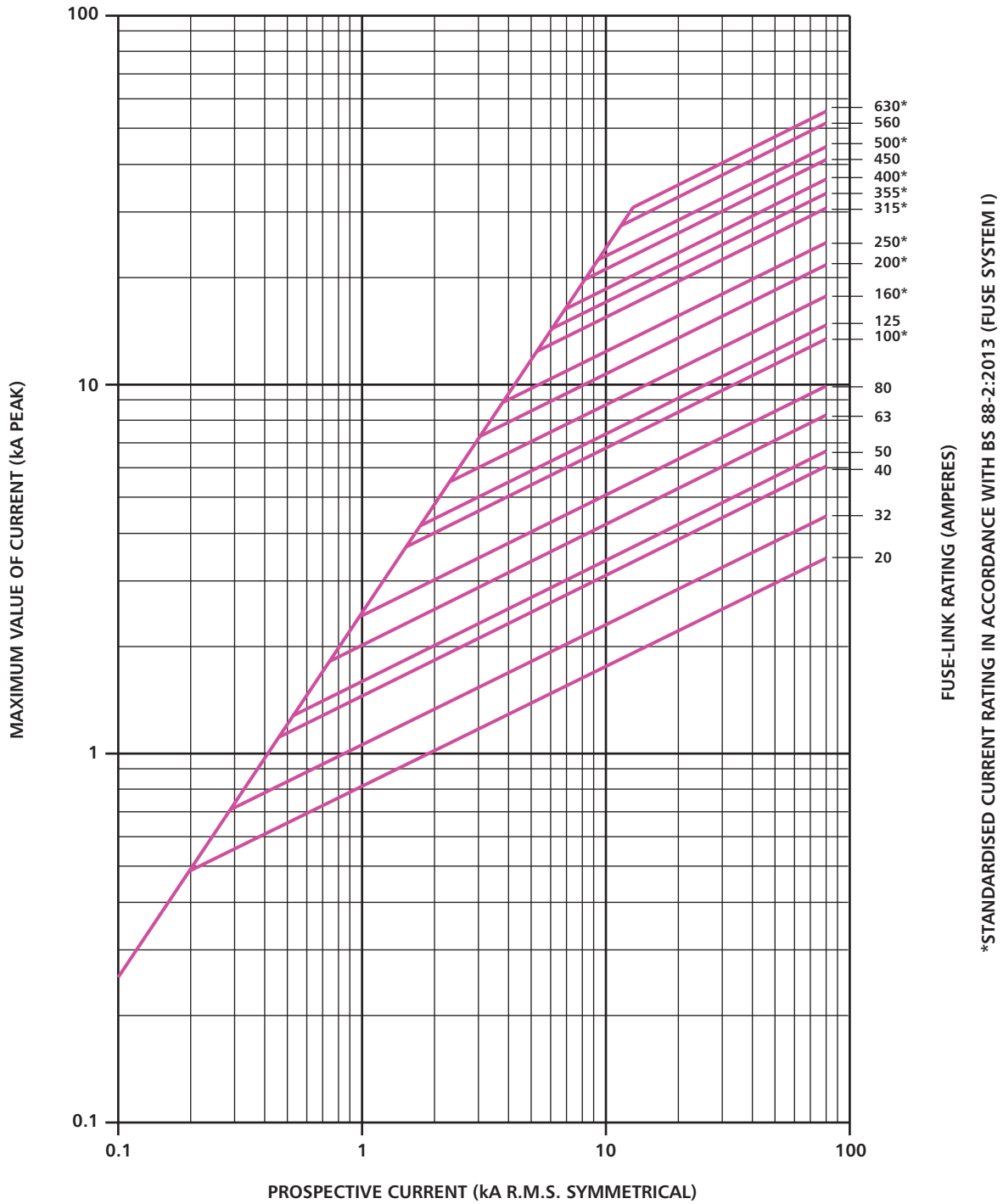
Rated Breaking Capacity - 80 kA at 415 V a.c.

ASTA (20) Certified

CUT-OFF CURRENT CHARACTERISTICS

Type "J" Electricity Supply Distribution Fuse-Links

Issue: 7 Date: 26.5.2021 Approved TH



*STANDARDISED CURRENT RATING IN ACCORDANCE WITH BS 88-2:2013 (FUSE SYSTEM I)

IEC 60269-2:2013 / BS HD 60269-2:2013 / BS 88-2:2013

Rated Voltage 415 V a.c.

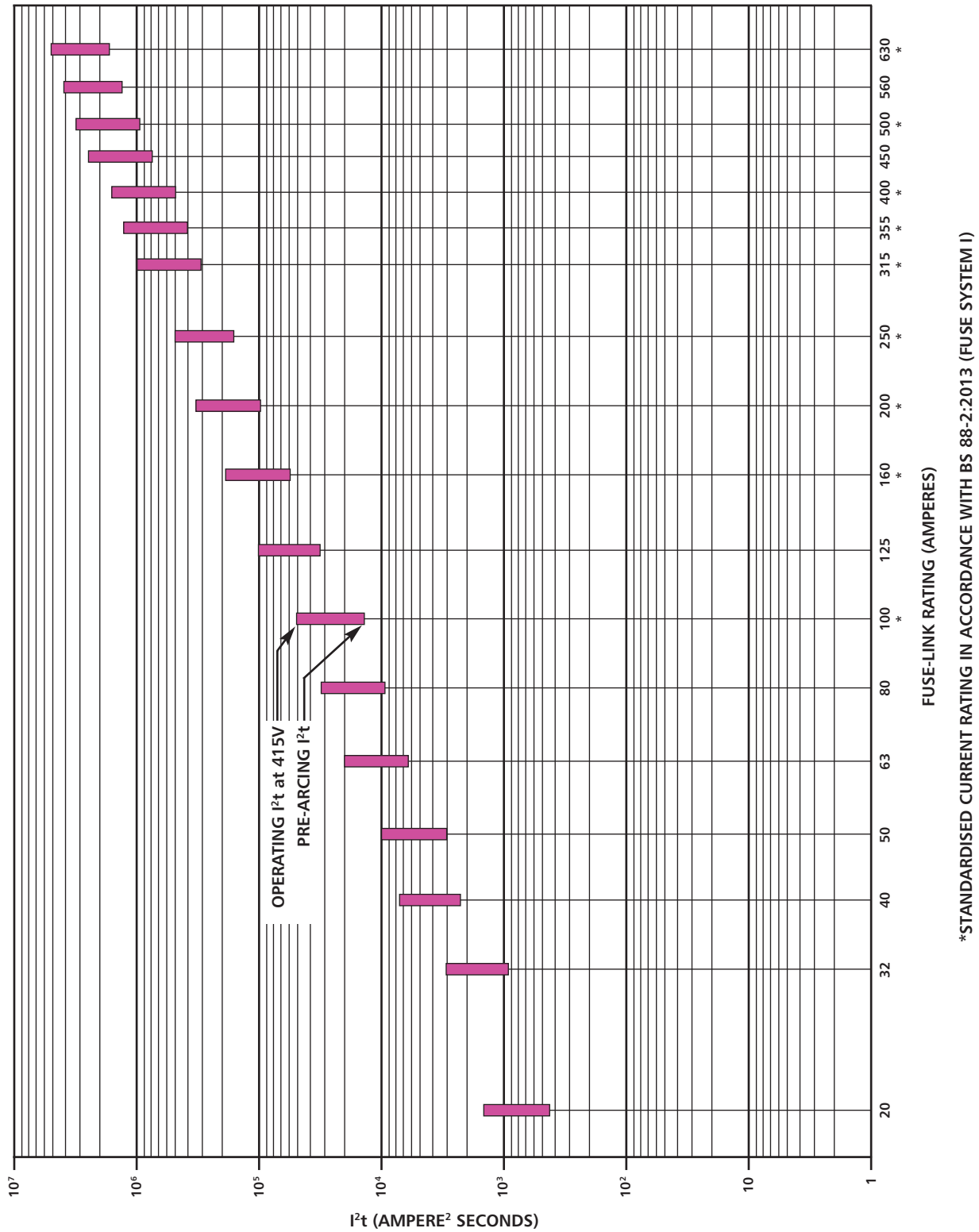
Rated Breaking Capacity - 80 kA at 415 V a.c.

ASTA (20) Certified

I²t CHARACTERISTICS

Type "J" Electricity Supply Distribution Fuse-Links

Issue: 7 Date: 26.5.2021 Approved TH

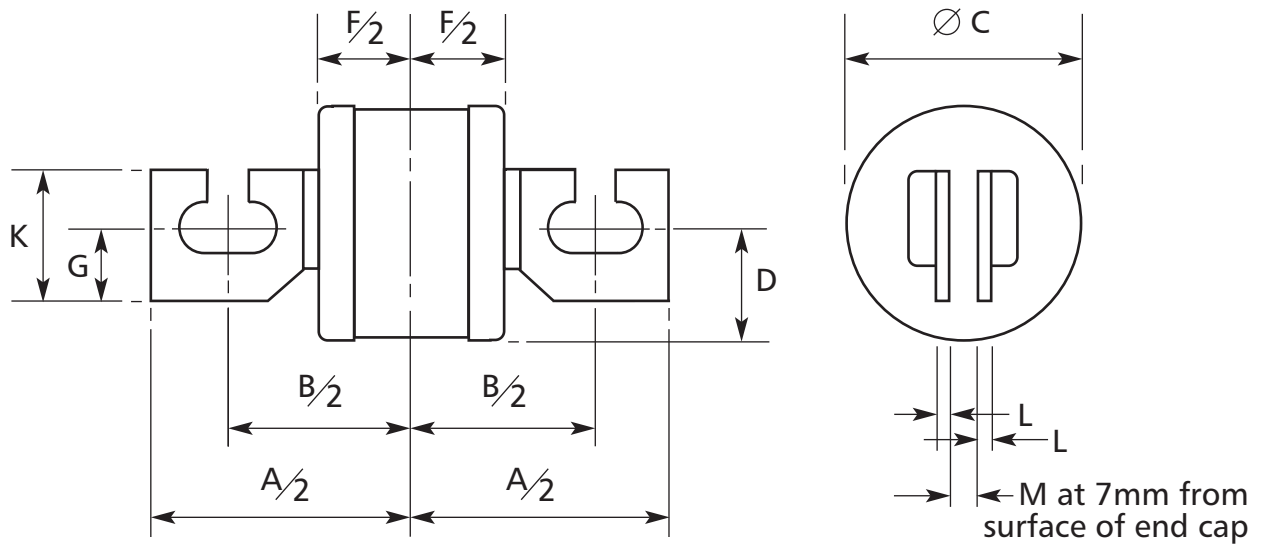


IEC 60269-2:2013 / BS HD 60269-2:2013 / BS 88-2:2013

Rated Voltage 415 V a.c.

Rated Breaking Capacity - 80 kA at 415 V a.c.

ASTA  Certified

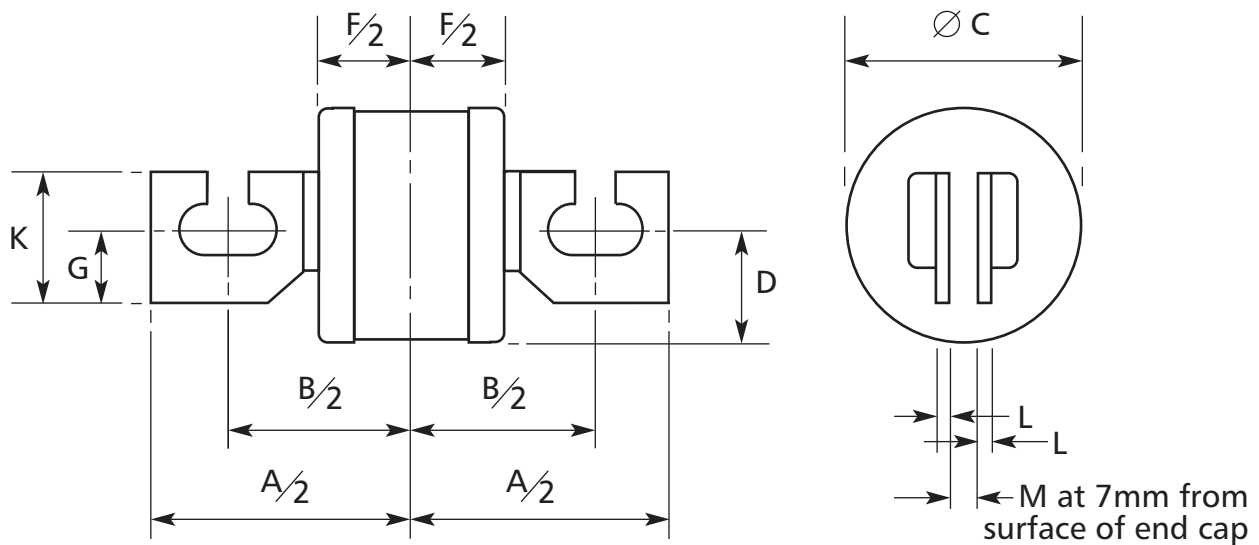


TYPE REF.	CURRENT RATINGS (A)	DIMENSIONS (mm)								
		A max	A nom	C max	D max	F max	G nom	K max	L nom	M max min
JHU	315*	100	76	41	12	45	13	25	1.6	4.25 4.17

*STANDARDISED CURRENT RATING IN ACCORDANCE WITH BS 88-2:2013 (FUSE SYSTEM I)

The Performance Characteristics are in compliance with the standardised performance requirements of BS 88-2:2013 (Fuse-System I) to which the cartridge is ASTA (20) Certified and authorised when incorporated in a Fuse-Link of standardized dimensions with fixing centres of 82mm or 92mm (Type Refs. "JPU" or "JSU")

Rated Voltage 415 V a.c.
Rated Breaking Capacity - 80 kA at 415 V a.c.

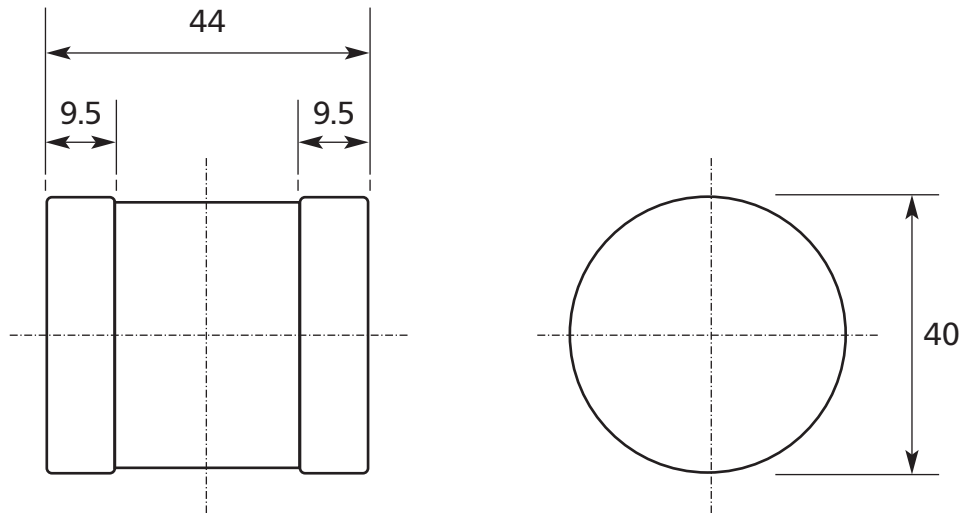


Type Ref.	Current Ratings (A)	Dimensions (mm)								
		A max	A nom	C max	D max	F max	G nom	K max	L max	M max min
JSU	800	130	92	73	25	45	22	38	3.2	8.13 8.05

The Fuse-Link dimensions are in compliance with the standardized dimensional requirements of BS 88-2:2013 (Fuse System I) which, however, specifies performance requirements for ratings only up to and including 630A.

The Performance Characteristics are therefore in compliance with the standardized performance requirements Of BS 88-22:2013 (Fuse-System E) to which the cartridge is ASTA (20) Certified and authorised when incorporated in a Fuse-Link of standardized dimensional reference C3 in accordance with BS 88-2:2013 Fuse System E (Lawson Type Ref. "TLM").

Rated Voltage 415 V a.c.
Rated Breaking Capacity - 80 kA at 415 V a.c.



Type Ref.	Current Rating (A)
JF	20, 32, 40, 50, 63, 80, 100*, 125, 160*, 200*, 250*, 315*

*Standardised Current Ratings in accordance with BS 88-2:2013 (Fuse System I)

(Note - 250A and 315A ratings are restricted to intermittent loading when installed in 200A fuse fittings.)

Performance characteristics in compliance with the standardised requirements of BS 88-2013 (Fuse System I)

Rated breaking capacity determined in accordance with the requirements of IEC 60269-2:2013 / BS HD 60269-2:2013 / BS 88-2:2013 and Confirmed by ASTA Test Report

(Note - ASTA cannot issue an ASTA Certificate as there is no recognised standard in existence for this fuse-link.)

Rated Voltage 415 V a.c.

Rated Breaking Capacity - 80 kA at 415 V a.c.